

## Family of Abrasion Resistant Products

### Garlock Expansion Joints



#### PARTNERING FOR SUCCESS

Garlock is invested helping you extend the service life of your expansion joints. Abrasive applications present a particularly unique challenge.

#### DID YOU KNOW?

The combination of abrasive media and temperature that runs through your expansion joints can have a significant impact on service life.

#### THE GARLOCK DIFFERENCE

Garlock has engineered solutions and will work with you to select the appropriate materials based on your specific operating conditions.

The Garlock Expansion Joint Family of Abrasion Resistant Products has been developed for highly abrasive applications. By design, these products are proven to reduce wear and extend the service life of the expansion joints. Together, ABRA-LINE®, ABRA-SHIELD™, and Natural Rubber provide superior performance and exceptional quality in Power Generation, Fertilizer, Mining, Pulp and Paper, Wastewater, Marine and other markets.

#### ABRA-LINE®

Developed for highly abrasive applications, our proprietary, millable urethane formula was designed to be the most abrasion resistant rubber liner available in an expansion joint. It has been proven to reduce wear and extend service life by causing even the most aggressive media to simply slide over the liner rather than dig in and remove material. Third party testing revealed that ABRA-LINE™ expansion joints last 2-3 times longer than traditional elastomers. Plus, the ABRA-LINE™ expansion joints' unique yellow color takes the guesswork out of determining if they are due for replacement. As the liner wears down, the yellow color darkens as the black backing becomes more prominent.

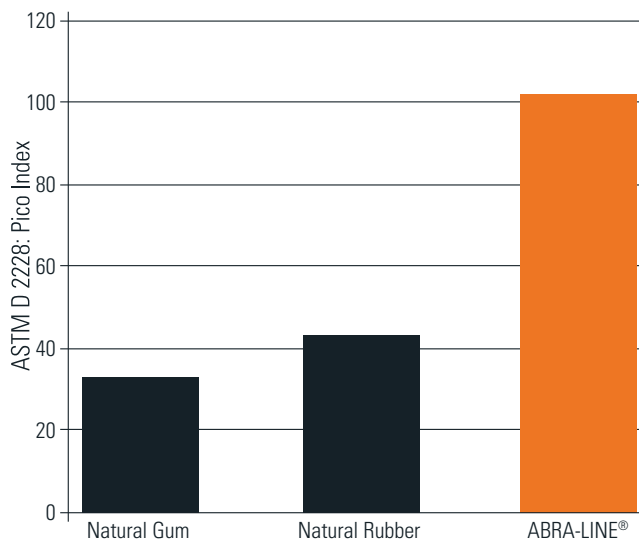
NOTE: Previously referred to as Style 404, 404HP, 404EPS, 404MAX, 406, 4394

#### NATURAL RUBBER

A common industry solution for basic abrasion resistance, natural rubber is often seen in a soft, tan, gum form. Natural Rubber from Garlock is black in color and features carbon black and other additives designed to improve its innate abrasion resistance and other, key physical properties.

NOTE: Natural Rubber is not available for Garlock Industrial Hose

#### ABRASION RESISTANCE



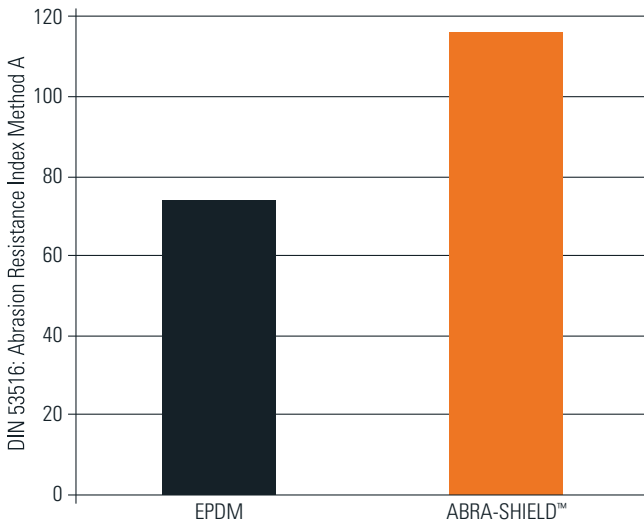
NOTE: 180°F and under material options and test method

## ABRA-SHIELD™

Our proprietary hydrogenated nitrile butadiene rubber formula was specifically engineered for highly abrasive applications above the temperature limit of ABRA-LINE™. With over 50% better abrasion resistance than standard materials, ABRA-SHIELD™ has proven high performance in diverse, aggressive applications with short or long term heat exposure up to 300°F (150°C).

Unlike natural rubber, ABRA-SHIELD™ has superior resistance to attack by petroleum oils, ozone, and UV.

### ABRASION RESISTANCE



NOTE: 300°F and under material options and test method

## Available Styles

### GARLOCK INDUSTRIAL HOSE

#### Suction Hose

Ideal for suction or discharge transfer of highly abrasive slurry where additional service life is desired when compared with industry standard natural rubber hoses.



### GARLOCK INDUSTRIAL HOSE

#### Discharge Hose

Ideal for discharge transfer of highly abrasive slurry where additional service life is desired when compared with industry standard natural rubber hoses.



Garlock Industrial Hose is currently available with ABRA-LINE® or ABRA-SHIELD® material.

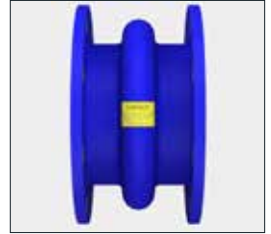
## Industries Served

- » Industrial Metals & Minerals
- » Oil & Gas
- » Power Generation
- » Pulp & Paper
- » Hydrocarbon Processing
- » Chemical Processing
- » Agrochemical
- » Water & Wastewater
- » Mining
- » Fertilizer

## Available Styles

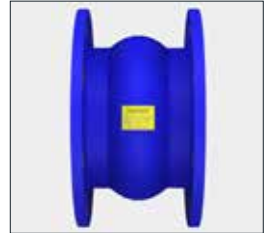
### STYLE 204 NARROW ARCH

Ideal for full vacuum applications on the inlet/suction side of a pump. Can be supplied with a filled arch to reduce wear and prevent solids being entrapped. Can be configured in an eccentric or concentric reducing design allowing flanges of unequal size to be connected.



### STYLE 206 EZ-FLO®

Ideal for pressure only applications on the outlet/discharge side of a pump. EZ-FLO® expansion joints contain a single wide flowing arch, eliminating the need for filled arches on slurry services. Its self flushing arch design eliminates media build up and reduces turbulence.



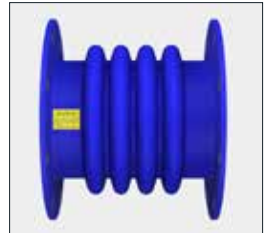
### STYLE 7250 FLEXOMATIC®

Ideal for connections when the main purpose is to reduce noise and vibration in piping systems. The no arch design does not trap solids and can be used in full vacuum applications.



### STYLE 9394

Ideal for low pressure applications that require a high level of flexibility and movement often found in the connections of hoppers, silos, shaker tables, vibratory conveyors, and bowl feeders.



### STYLE 8400

Ideal for low pressure applications with minimal movement.



EJ 9:40\_07.2021

#### GARLOCK

an Enpro Company

Tel: 1-877-GARLOCK / 315.597.4811

Fax: 800.543.0598 / 315.597.3216

www.garlock.com

Garlock

Garlock Australia

Garlock de Canada, LTD

Garlock Taiwan

Garlock China

Garlock Singapore

Garlock Germany

Garlock India Private Limited

Garlock de Mexico, S.A. De C.V.

Garlock New Zealand

Garlock Great Britain Limited