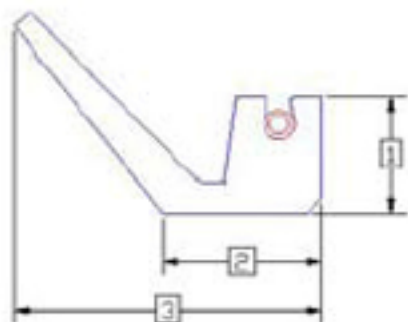
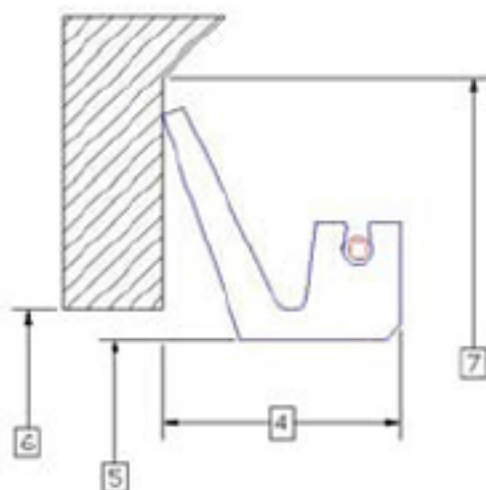


Model 145 Face Seal Dimensional Data

Cross-Section Dimensions



Assembled Dimensions



The model 145A1 and 145A2 face seals have consistent cross-section dimensions, regardless of shaft size, shown below. The model 143 can be made from either the 145A1 or 145A2, and would have the same basic dimensions as shown. The model 145A, 145L, and 145S cross-section dimensions change as shaft size increases. Please consult Garlock Klosure® Engineering for information on specific sizes.

Table 10 — Dimensional Data

DIM #	Description	Model 145A1	Model 145A2
1	Height of cross-section	1.000" (25.4 mm)	0.500" (12.7 mm)
2	Shaft contact width	1.344" (34.1 mm)	0.563" (14.3 mm)
3	Overall free width	2.594" (65.9 mm)	0.969" (24.6 mm)
4	Assembled width	2.000 ± 0.500" (50.8 ± 12.77 mm)	0.781 ± 0.156" (19.8 ± 4.0 mm)
5	Shaft Diameter	Application Dependent	Application Dependent
6	Maximum face bore	Shaft + 1.000" (Shaft + 25.4 mm)	Shaft + 0.391" (Shaft + 9.9 mm)
7	Minimum face diameter	Shaft + 4.500" (Shaft + 114.3 mm)	Shaft + 1.750" (Shaft + 44.5 mm)